



**APPLICATION BY MITCHAM CRICKET GREEN COMMUNITY & HERITAGE FOR ADDITION TO  
MERTON'S LOCAL LIST**

**Name of heritage asset**

Cathite House

**Address of heritage asset**

23a Willow Lane, Mitcham CR4 4TU

**Description of heritage asset**

20<sup>th</sup> century office building and former HQ office building of Scaffolding GB (SGB)

**Statement on how heritage asset meets Council criteria (architectural style; age & history;  
detailing; group value; building materials; subsequent alterations)**

Cathite House warrants local listing against the following criteria:

- Architectural style – Distinct example of the early factory building style for Willow Lane Industrial Estate. Concrete, metal and brick.
- Age and History – Nationally important historical associations with scaffolding industry and locally important historic associations with the origins of Willow Lane Industrial Estate, one of the major manufacturing and employment centres in the borough

Cathite House is understood to have been built between 1947 and 1950. It was the HQ of Scaffolding GB, pioneers of the “universal coupler” (Cuplock), tubular scaffolding construction technique and the Frame System. By 1960s SGB was the largest scaffolding company in the UK – see [https://www.gracesguide.co.uk/Scaffolding\\_\(Great\\_Britain\)](https://www.gracesguide.co.uk/Scaffolding_(Great_Britain)). SGB created the national network of HSS Hire shops. It was home to an important scaffolding training centre – see below

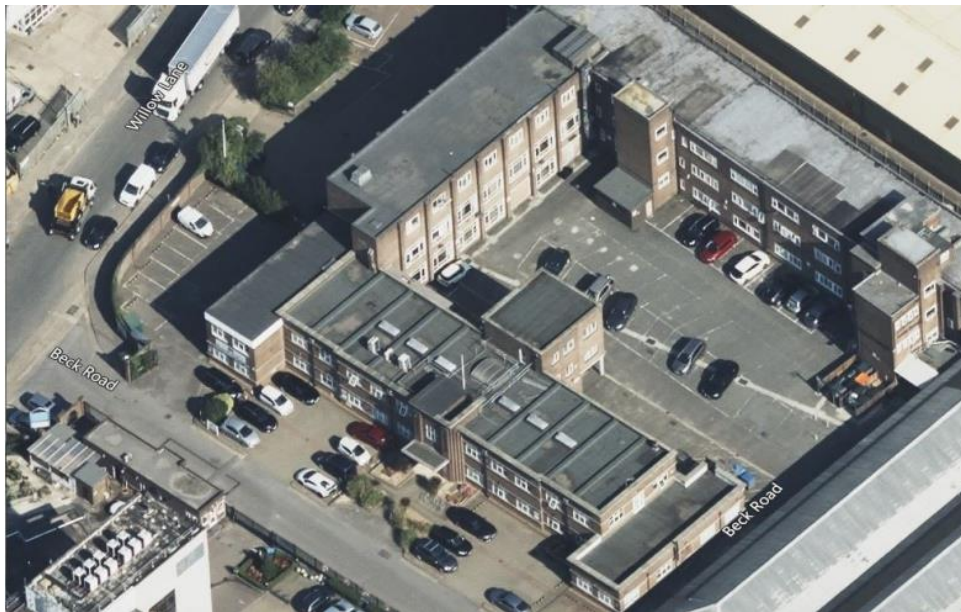
In 1995 Cathite House became the Head Office of Concrete Repairs Ltd (CRL), a specialist asset maintenance contractors for buildings and structures operating across the UK

**How many photos provided?**

6



Source – Mitcham History Notes



Contemporary aerial view (Bing maps)



Scaffolding Training Centre - Pathe News link (1969)

<https://www.youtube.com/watch?v=bbWhw9UkbbM>

METROPOLITAN POLICE GARAGE - Architect's Department - New Scotland Yard

Welded tubular construction does the job with less steel, skilful design saving up to 60%. Its clean modern appearance pleases the eye of the architect. The simple shapes which arise from the method of construction are easy to protect against corrosion.

**SCAFFOLDING (GREAT BRITAIN) LTD.**  
 WELDED STRUCTURES DIVISION  
 MITCHAM SURREY

Telephone: MITCHAM 3400 (18 LINES)  
 Telegrams: SCAFCO, MITCHAM

Branches at: ABERDEEN - BIRMINGHAM - BOURNEMOUTH - BRIGHTON - BRISTOL  
 CAMBRIDGE - CARDIFF - DOVER - DUBLIN - DUNDEE - EDINBURGH - EXETER  
 GLASGOW - HULL - LEEDS - LIVERPOOL - MANCHESTER - NEWCASTLE - NOTTINGHAM  
 OXFORD - PLYMOUTH - PORTSMOUTH - SOUTHAMPTON - STOKE-ON-TRENT - SWANSEA

Constructed by S.G.B. 

1951 SGB advertisement (Building magazine)

# BUILDERS PLANT—

**FOR HIRE OR SALE**

*Make a Bee-line for your nearest SGB branch 31 throughout the country*

**AND SAVE ON TRANSPORT COSTS!**

**LADDERS**  
**STEPS**  
**TRESTLES**  
**WHEELBARROWS**

ABERDEEN	CHELtenham	BULL	PLYMOUTH
BIRMINGHAM	DOVER	LEEDS	PORTSMOUTH
BOURNEMOUTH	DUBLIN	LIVERPOOL	PRESTON
BRIGHTON	DUNDEE	MANCHESTER	READING
BRISTOL	EDINBURGH	NEWCASTLE	SHEFFIELD
CAMBRIDGE	EXETER	NORTHAMPTON	SOUTHAMPTON
CARDIFF	GLASGOW	NOTTINGHAM	STOKE-ON-TRENT
		OXFORD	SWANSEA

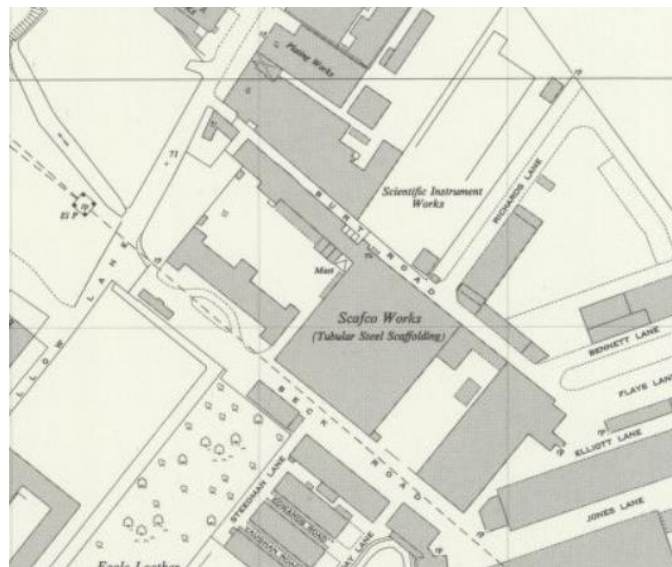
*New Branches NOW AT LEICESTER and MAIDSTONE*

—and remember, SGB can supply you also—**HIRE OF SALE**—with  
**SCAFFOLD FITTINGS • PROPS**  
**SPLITHEADS • PLATFORM**  
**STAGING • AND ALL TYPES**  
**OF EQUIPMENT**

**SGB**

**HIRE & SALES DIVISION**  
 OF SCAFFOLDING (GREAT BRITAIN) LIMITED  
 HEAD OFFICE & WORKS: MITCHAM, SURREY  
 TELEPHONE: MITCH AM 3400 (2LINES) TELEGRAMS: SCAFCO, MITCHAM

June 1958 advert



1953 OS Map